

## **Electric order picker - long distance transport**

Silent, quick and efficient order picking - Logirunner with its fast driving speed ensures orders are handled swiftly and efficiently especially where items are being picked in areas with long distances between work stations.

Logirunner has an excellent manoeuvrability, making operations in confined areas easy.

Focus is put on good working environment and the comfort of the driver! The low entering height makes it very easy to get on and off the Logirunner and makes it a comfortable place to work. Steps on each side of the driver's platform make it easy and safe for the driver to reach the goods. Logirunner has side protection of the driver's platform.



## Technical Specifications

Facts about Logirunner:

- available with one or two platforms
- differential which drives and brakes on both rear wheels
- AC technology - comfortable driving
- hour meter and battery indicator
- closed gear box - low maintenance costs
- large battery capacity
- programmable driving speed

Optimum comfort/safety for the driver:

- low entering height
- adjustable height of steering handle
- non-skid, shock absorbing rubber mat on the driver's platform
- steps - articles can be reached safely
- side protection of the driver's platform
- very low noise level

Strong construction ensures a long operating life and low maintenance costs.



Battery drawer for quick replacement and easy maintenance of the batteries. Perfect for three-shift operation.



Logirunner being used for order picking. Steps make it easy to reach goods.



Electronical stepless speed control. Central location of all control buttons.

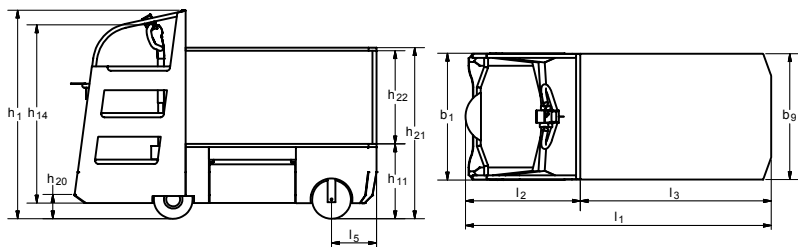


Low entering height for the driver. The pedal acts as a dead man's pedal.



Mechanical parts are enclosed providing protection against external impacts.

Product (measured in mm)	LR500	LR500D
Capacity in kg (load)		500
Length of platform $l_3$		1230
Width of platform $b_9$		810
Length without platform $l_2$		739
Length of overhang $l_5$		290
Overall length $l_1$		1969
Overall width $b_1$		816
Entering height $h_{20}$		157
Overall height $h_1$		1344
Height of handle $h_{14}$	1147 - 1200	
Height of lower platform $h_{11}$	482	
Height of upper platform $h_{21}$		1102
Distance between the two platforms $h_{22}$		600
Edge on platform lowered/raised	0 / 10	
Motor, speed control electronically variable	24 V 1 kW	
Driving speed irrespective of load	15 km/h	
Max. gradient performance (500 kg)	11%	
Weight without battery	283 kg	298 kg
Battery	100Ah (2x12V) or 180Ah (4x6V)	
Necessary aisle width 90° cross aisle	1500	
Min. turning radius $W_a$	2250	
Pulling power	1900 N	



### Optional extras for Logirunner:

- Extra platform (LR500)
- Extended platforms
- Rubber covered platforms
- Writing desk (A4 format)
- Towing eye
- Built-in charger
- Horizontal shock-resistant wheels (special chassis is required)
- Seat for the driver
- Lights

We also offer tailor-made solutions.

Please ask for further information or visit our website [www.logitrans.com](http://www.logitrans.com)